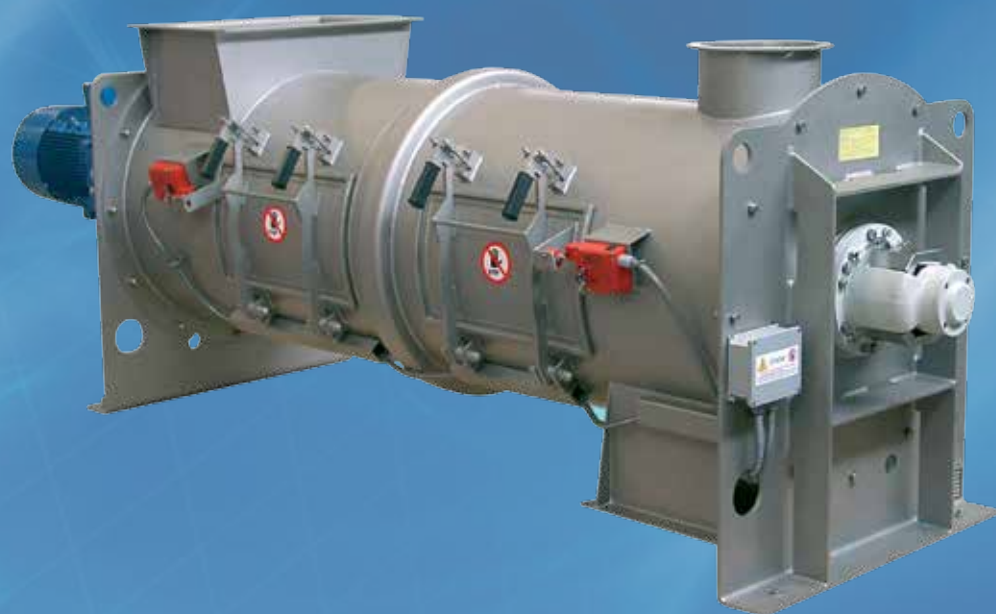


Continuous Ploughshare Mixers

WAH



CONSTANT MIXING QUALITY

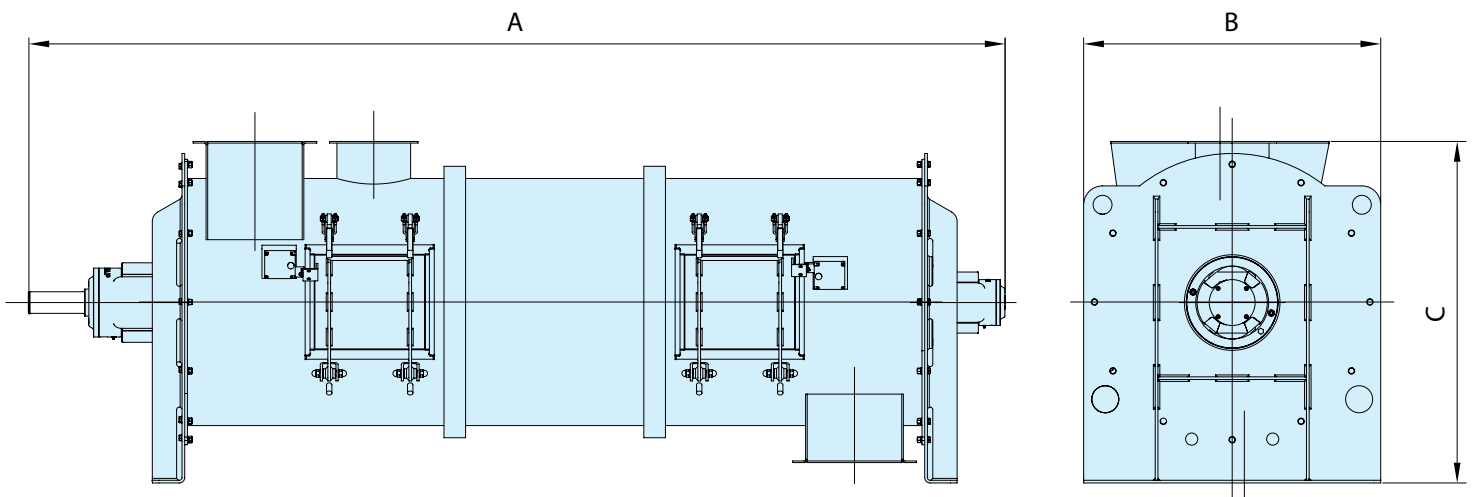
WAH Continuous Horizontal Single Shaft Mixers consist of a cylindrical mixing drum vessel with an inlet at one end of the mixing drum, an outlet at the opposite end and a venting spout, a full material mixing shaft, two drum closing end plates that carry flanged end bearing assemblies complete with integrated air or gas-purged shaft seals, and a drive unit complete with power transmission.

Ploughshares or inclined blade-type shovels rotate as mixing tools in a special arrangement on the mixer shaft inside the drum vessel. The result is a turbulence in the mix that constantly involves all the product particles in the mixing process. The formation of dead spots or slow-movement zones in the mixing drum is prevented ensuring precise mixing. In some cases, to obtain the desired mixing effect, separately driven high-speed choppers can be installed.

Technical Features

- Capacity: 2 ~ 1,000 m³/h (1.2 to 590 cfm) depending on recipe and mixer configuration
- Possibility of adding up to 20% of liquid
- End bearing assemblies with various types of air or nitrogen-purged shaft seals or grease sealing
- Heavy-duty mixing chamber manufactured from carbon steel, anti-wear steel or 304L / 316L stainless steel
- Stainless steel surface finish: grit silking, mirror polishing, glass bead blasting
- Wide range of mixing tools (ploughshare, toothed ploughshare, blade-type, toothed blade) available with anti-wear coating on request

Overall Dimensions



	A	B	C	50% dm ³ /h		Empty Weight (kg)
				60 s	180 s	
WAH00075	1,690	485	556	2,022	674	210
WAH00150	1,960	570	634	4,031	1,344	350
WAH00300	2,220	670	801	7,892	2,631	580
WAH00500	2,550	770	920	13,716	4,572	840
WAH01000	3,140	930	1,118	27,993	9,331	1,390
WAH01800	3,670	1,100	1,265	50,170	16,723	2,100
WAH03000	3,920	1,340	1,472	82,577	27,526	2,800
WAH04800	4,510	1,500	1,800	134,281	44,760	3,800
WAH06000	4,816	1,600	1,860	165,708	55,236	4,500
WAH08800	5,325	1,810	2,133	245,796	81,932	5,840
WAH10500	5,580	1,910	2,237	295,322	98,441	6,600
WAH15000	6,090	2,110	2,465	411,885	137,295	8,200
WAH20000	6,617	2,312	2,665	549,180	183,060	11,903
WAH25000	6,888	2,432	2,735	686,475	228,825	8,13,653

Benefits

- ✓ **Maximum mixing homogeneity**
- ✓ **No product damage**
- ✓ **Low maintenance**
- ✓ **Durable**

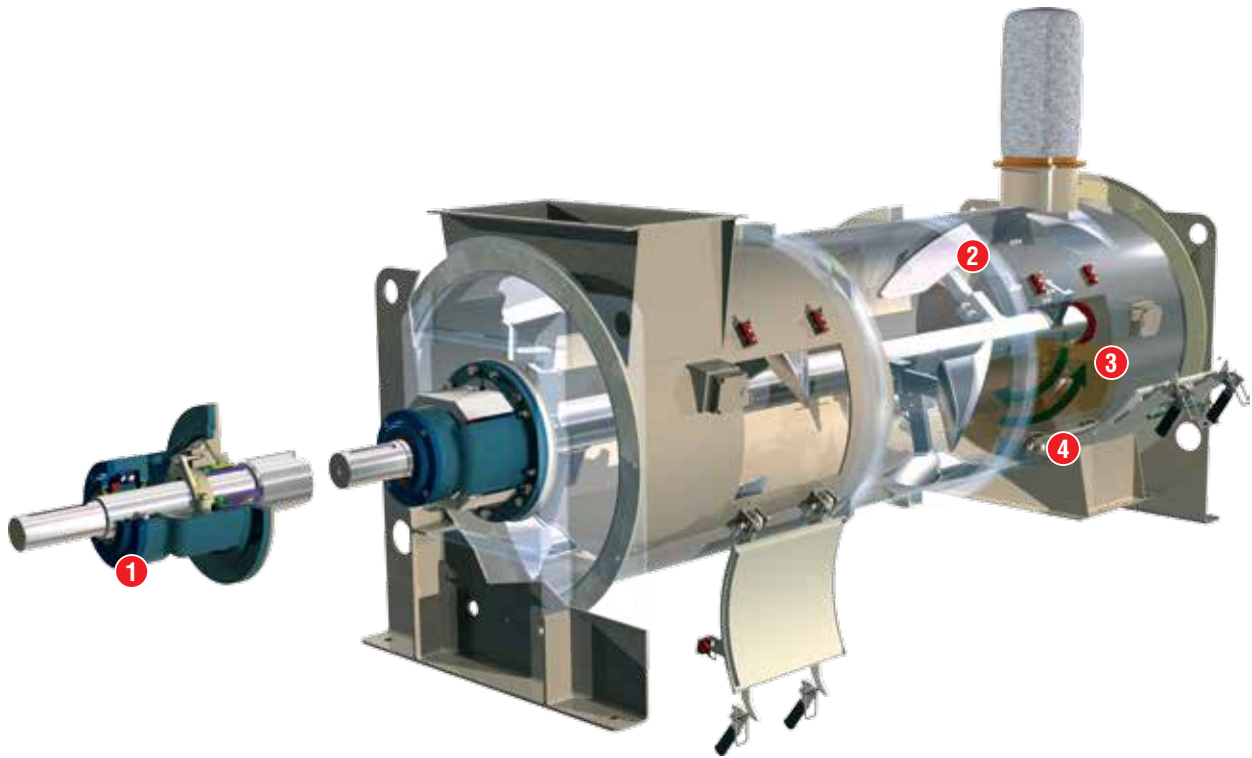
- ✓ **Power rating adapted to application**
- ✓ **High uptime**
- ✓ **Mixing know-how and test facilities.**

1 End Bearing Assemblies with Various Types of Shaft Seals and Option of Air or Nitrogen Purging

3 Easy Cleaning and Access to All Internal Parts of the Mixer

2 Easy Tool Adjustment and Replacement

4 Heavy-Duty Mixing Chamber Manufactured in Carbon Steel, Anti-Wear Steel, or 304 - 304L - 316 - 316L Stainless Steel



Accessories



Choppers, liquid injectors and temperature jacket



Chamber liner in special antiwear material



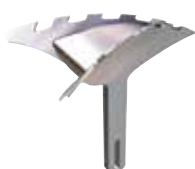
Special tool arrangement



Frontal discharge



Standard Mixing Tool



Toothed Edge Mixing Tool



Blade-Type Mixing Tool



Toothed Blade Mixing Tool



Anti-Wear Coating (option for all mixing tools)

Application



200001157 March 2015 Rights reserved to modify technical specifications.



www.wamgroup.com