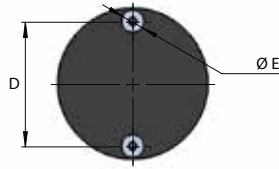
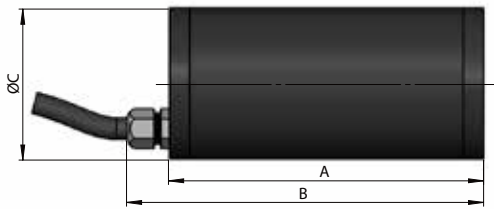




MVE DC - Electric vibrators - Direct Current - For industrial sweepers



Model	OVERALL DIMENSIONS									
	A		B		Ø C		D		Ø E	
	mm	in	mm	in	mm	in	mm	in	mm	in
MVE60DC 12	167	6.6	189	7.4	80	3.1	66	2.6	12	0.5
MVE60DC 24										
MVE60DC 36										
MVE100DC 12	207	8.1	230	9.1	80	3.1	66	2.6	12	0.5
MVE100DC 24										
MVE100DC 36										

Model	rpm	MECHANICAL FEATURES				ELECTRICAL FEATURES				
		Working moment		Centrifugal force		Weight		Input Power		Max current
		kg*cm	in-lb	kg	lb	kg	lb	kW	Hp	A
MVE60DC 12	3000	1.19	1.04	60	132.3	3.8	8.4	0.10	0.13	12.7
MVE60DC 24	3000	1.19	1.04	60	132.3	3.8	8.4	0.10	0.13	6.4
MVE60DC 36	3000	1.19	1.04	60	132.3	3.8	8.4	0.10	0.13	4
MVE100DC 12	3000	1.99	1.72	100	220.5	4.8	10.6	0.11	0.15	14
MVE100DC 24	3000	1.99	1.72	100	220.5	4.8	10.6	0.11	0.15	7
MVE100DC 36	3000	1.99	1.72	100	220.5	4.8	10.6	0.11	0.15	4.5

MVE DC - ELECTRIC VIBRATORS FOR SWEEPERS

APPLICATION Industrial sweepers

PROBLEM SOLVED Cleaning of dirt collection hopper

FEATURES

DUTY CYCLE Discontinuous - S1

STANDARD CABLE 1m

ENVIRONMENT TEMPERATURE From -20°C to 40°C (from -4°F to 104°F)

OPTIONS

CUSTOMIZED CABLE Available

This information is furnished without warranty, representation, inducement or license of any kind. It is accurate to the best OLI knowledge or is obtained from sources believed to be accurate. OLI therefore assumes no legal responsibility.